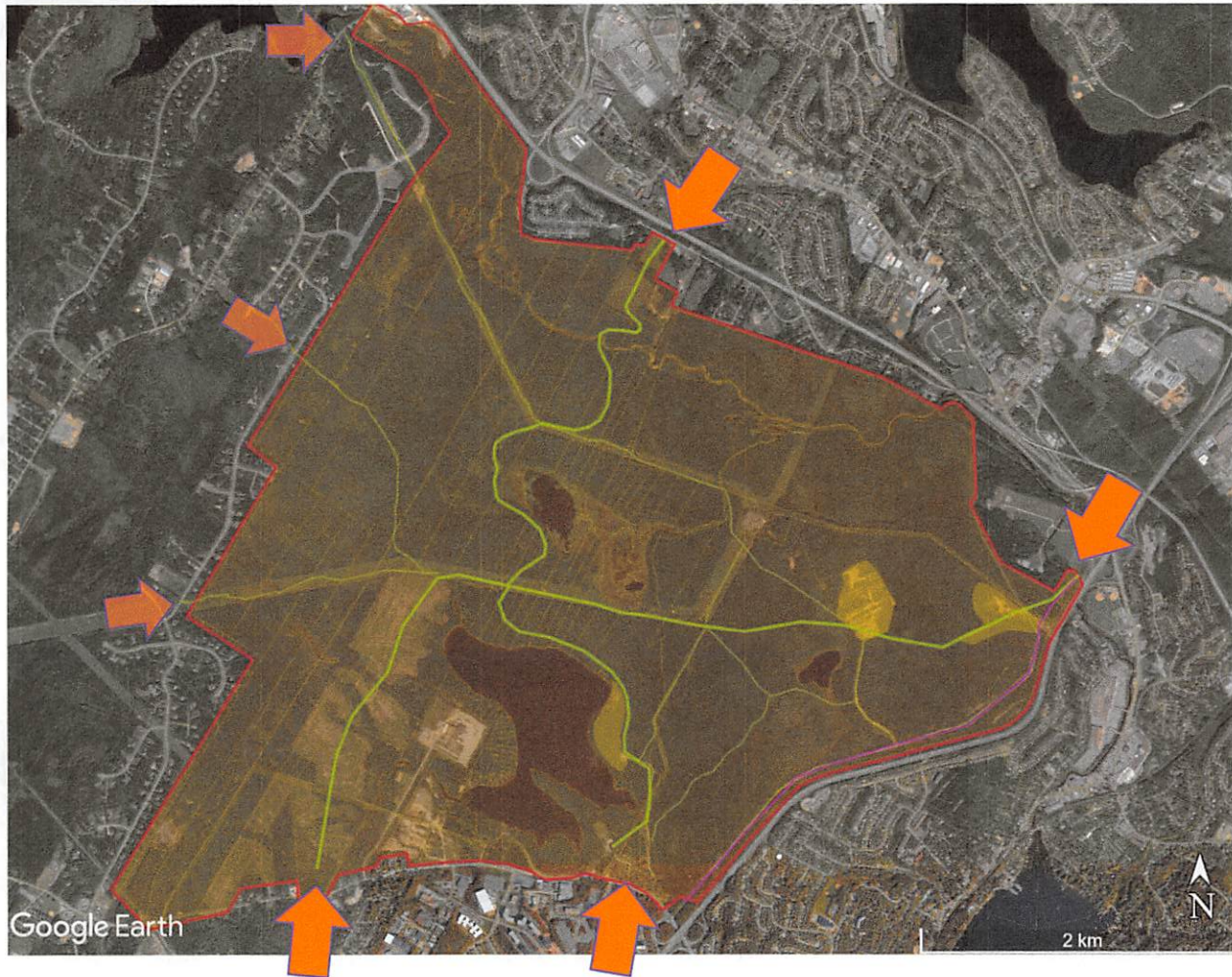

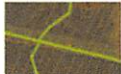

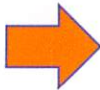



# Sandy Lake – Sackville River Regional Park

## Planning vision



Existing and future trails and access points to Sandy Lake – Sackville River Regional Park

-  Proposed boundary of Sandy Lake – Sackville River Regional Park
-  Primary trail system within the Park
-  Secondary trail system within the Park
-  Primary access point to the Park
-  Secondary access point to the Park

The proposed trails alignment is based on site topography, on recreational and environmental values, and on preferred recreation destinations. These trails also provide opportunities for connection with trail and transportation systems external to the Park. The primary and secondary entrance points to the Park are located in places with a convenient connection to public road system.

901 Street St. Acad. SACR, LPP  
 14 Avenue Terrace  
 Halifax NS B3H 2K2  
 902-425-2222  
 www.sackville.ca

**SMART LAND DEVELOPMENT**  
 CONSULTING